

Knowledge only grows when it's shared

Exploration continues - A progress report

Johan Sevenhuijsen
johan7h@gmail.com
June 26 2021

Purpose

- Keep you up to date about research projects,
- Developments, findings and open questions
- Sharing those is the primary purpose of this study group
- At the moment I'm working on
 - Postage Due (Doplatit) stamps (1st series)
 - Postal stationary with imprint of Hradčany stamps
- Hopefully inspirational and leading to further cooperation
- There is still so much to discover!

Doplatit – quick progress

- First meeting: 30 haler plate 3 (and 4?)
- Zpravodaj Knihtisk # 94 confirmed
- Even partial plating manual for plates 3-4 confirming both do exist
- New project: making Czech plating manuals available in English, translated, edited and newly illustrated
- Mark Wilson will do most of the work, already has consent from author



ZP 11



ZP 11



ZP 10,20



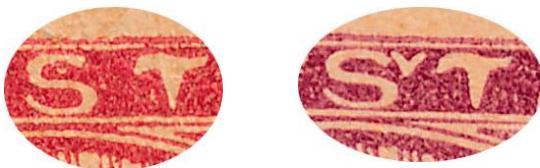
ZP 100

Postal Stationary - introduction

- Postcards, but also parcel forms, money orders, telegram forms
- First issues used Hradčany design for imprinted stamp
- See Pofis catalogues (from 1998, 2001)
- See introductory article with Robert Lauer in “Specialist”
- In most cases stamp dies were made from plates etched from the same negative as stamps plates
- In some cases use of the same plates, cut up after stamp printing
- In some other cases use of different design
- How many different dies were used, how many printings, when?

10 haler – first design

- Plates 1 – 4 used for stamps; plates 5 – 6 for stationary (13 different items)
- Plates were cut up to individual dies, used in the printing plates for stationary
- “Viennese” cards and forms of different design and technique



10 haler – first design



Pos 12 plate 2 - stamp
Dot by corner
Dot on frame



Pos 12 plate 5/6 A – CDV07
A of Mucha forms dot



Pos 12 plate 5/6 B – CDP02B
Short and broken main ray

Up to now 166 (out of possible 200) dies found used on postal stationery and described

10 haler fifth design

- Used on 6 different parcel cards
- Found: 21 dies from plate II (cut up after use for stamps) and 34 dies from a different plate III



Plate II pos 1 - stamp
Dent in oval (negative)
Dot in 6th spiral (specific)



Plate II pos 1 – CPP16
Dent in oval (negative)
Dot in 6th spiral (specific)



Plate III pos 1 – CPP15
Dent in oval (negative)
Rays in sky (specific)

15 haler

- Plate VII was used to print a small number of stamps (est.: 3600 panes) in May-June 1919 (unclear why...)
- Then cut up to make 97 dies for 15 h cards, printed from Sept. 1919
- A plate VIII was also made and 14 dies were used for postcards.



Plate VII-pos 8 as stamp and from card



Plate VIII: open spiral

20 haler fifth design

- Used on cards and forms
- Plates I and II used for stamps
- Black print of plate III present in Prague Museum
- Dies used on stationary from different plate IV



Plate I pos. 6 - stamp



Plate III pos. 6 – black print



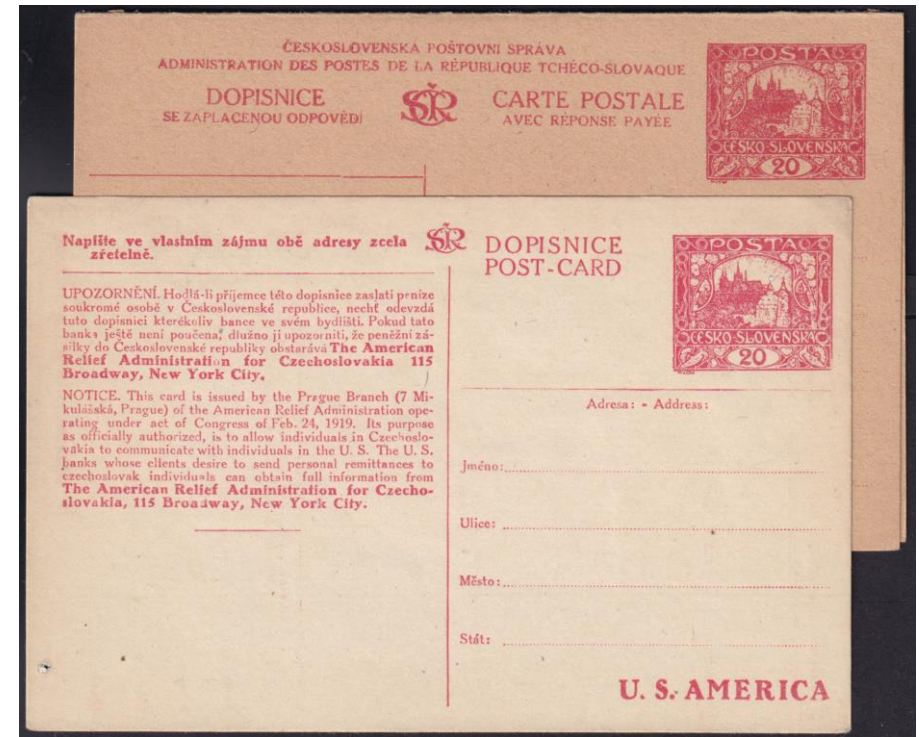
Plate IV pos. 6 – CDV22

20 haler – design Vb

- Proof version from May-June 1919 used for stationary



Two different plates for this proof made!
All have closed 4th spiral and bar type II
Shading in doves and hearts are dots, not lines



Many unresolved questions remain

- Which dies were used on each type of postal stationary?
- How many different printing plates (of 32 for postcards, 16 for forms) were used for each type?
- Can printing dates be established (based on dates on use)?

These questions can only be further answered on the basis of study of as many items of each type as can be found.

There is fragmented knowledge in Czechia and in the West and material is present in many collections (also of postal history!). Only pooling resources can lead to further steps. No one could hope to resolve everything on his/her own.

Cooperation is inspiring and win-win

- Over the past years virtually everything I have done, written and discovered would have been impossible without close cooperation and mutual support.

How you can contribute and profit in this group:

- Please share scans of relevant material from your collections for study purposes
- Please share your thoughts, questions and comments on all contributions
- Please let us know what you are working on and looking for
- Let's exchange want-lists (plate reconstructions)!